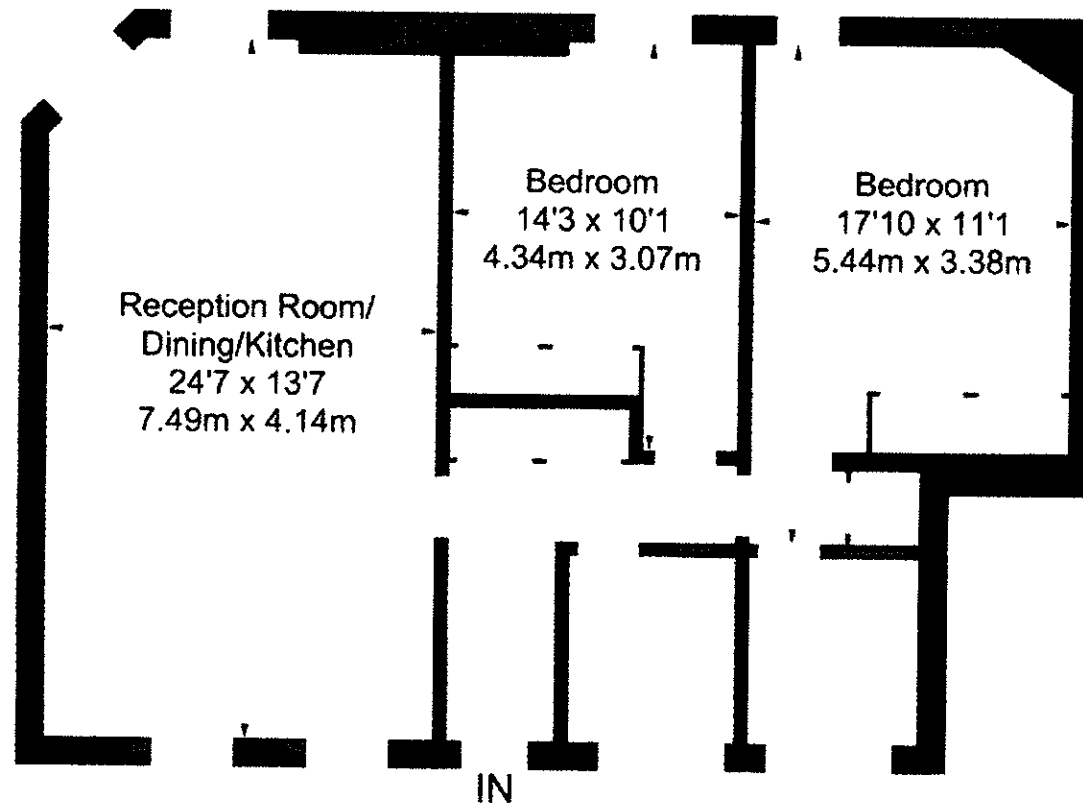


Thurloe Court



Approximate Gross Internal Area = 821 sq ft / 76.3 sq m



Third Floor

FLOORPLANZ © 2018 0203 9056099 Ref: 219676

This plan is for layout guidance only. Drawn in accordance with RICS guidelines. Not drawn to scale unless stated. Windows & door openings are approximate. Whilst every care is taken in the preparation of this plan, please check all dimensions, shapes & compass bearings before making any decisions reliant upon them.